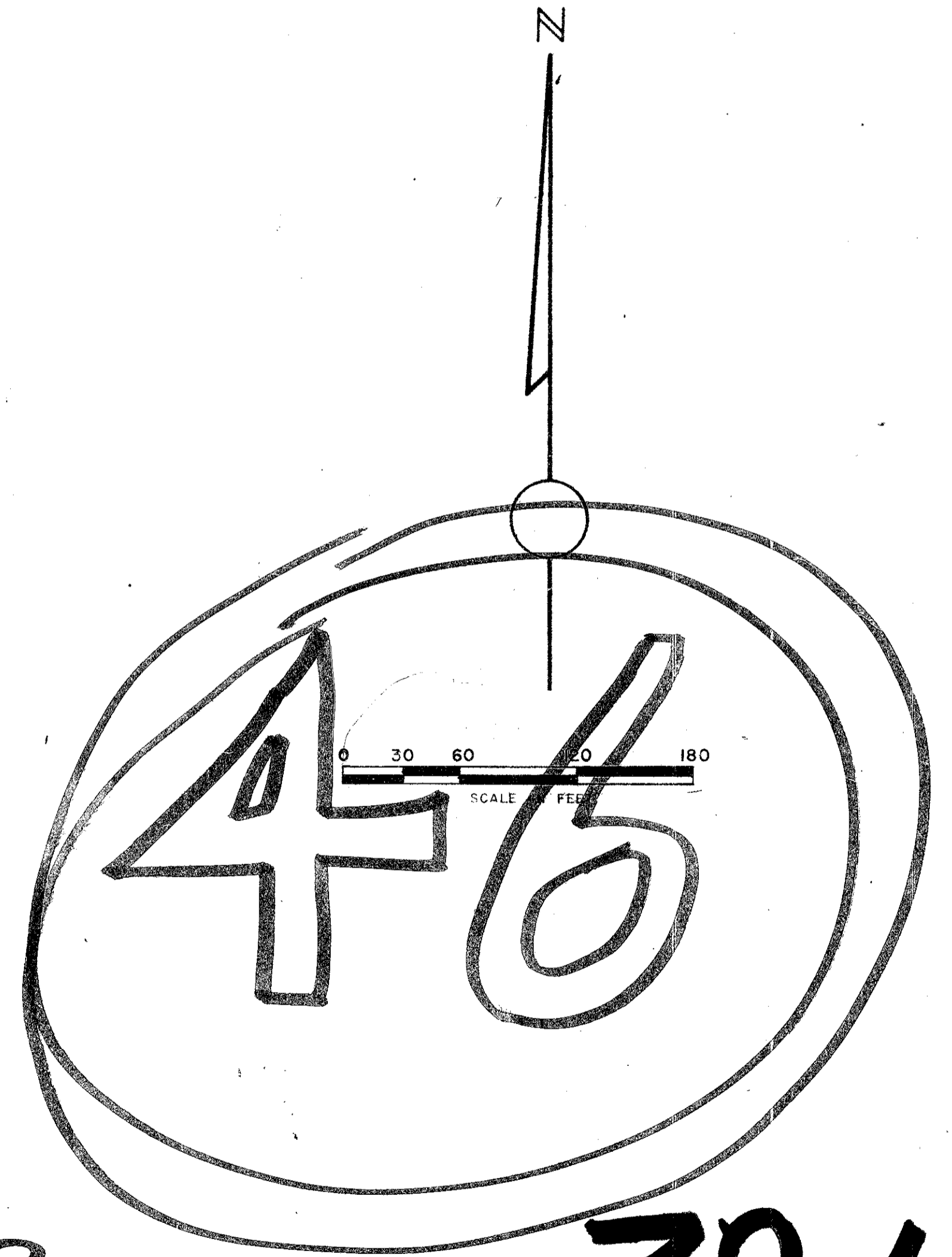
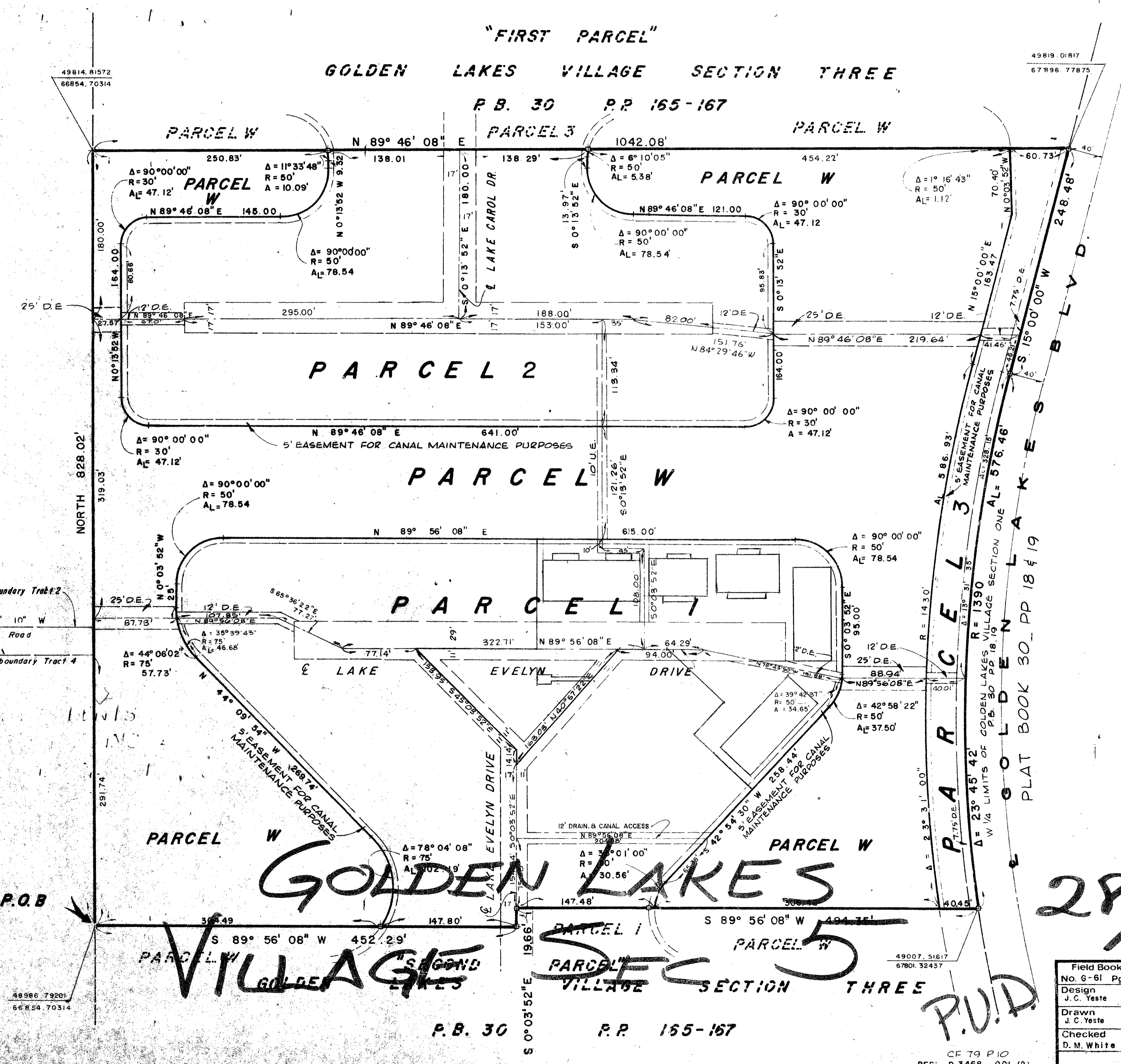


"A PLANNED UNIT DEVELOPMENT"
GOLDEN LAKES VILLAGE SECTION FIVE
IN SECTION 28, TOWNSHIP 43 SOUTH,
RANGE 42 EAST.

STATE OF FLORIDA
COUNTY OF PALM BEACH
This Plat was filed for record at _____
this _____ day of _____
19____ and duly recorded in Plat Book No. _____
on page _____
JOHN B. DUNKLE, Clerk Circuit Court
By _____ D. C.

PALM BEACH FARMS CO. PLAT 3
P.B. 2 PG. 46
P.B. 2
P.B. 2



28/143/32/116
0251-313

49814, 81572
66854, 70314

49819, 01817
67896, 77875

P.U.D.
REF: D 3468 - 001 (2)

Field Book No. G-61 Pg. _____	ROBERT E. OWEN & ASSOCIATES, INC.	GOLDEN LAKES VILLAGE SECTION FIVE	Sheet 2 of 2
Design J. C. Yeste	ENGINEERS - PLANNERS - SURVEYORS	IN SECTION 28, TOWNSHIP 43 SOUTH, RANGE 42 EAST.	File No. BF 2205-B
Drawn J. C. Yeste	WEST PALM BEACH FLORIDA		
Checked D. M. White			
Approved		Date NOV. 1976	